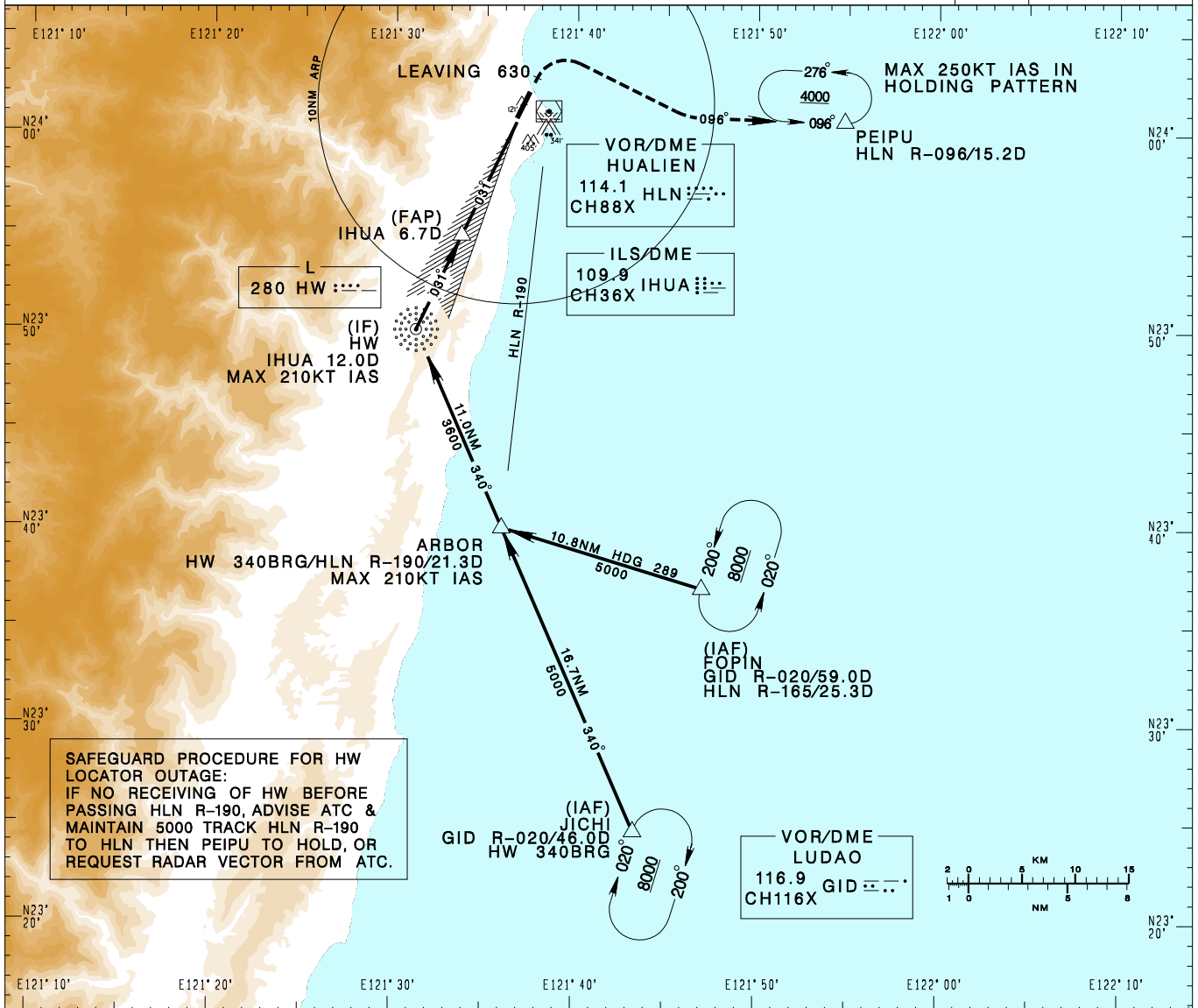


花蓮機場
HUALIEN AD

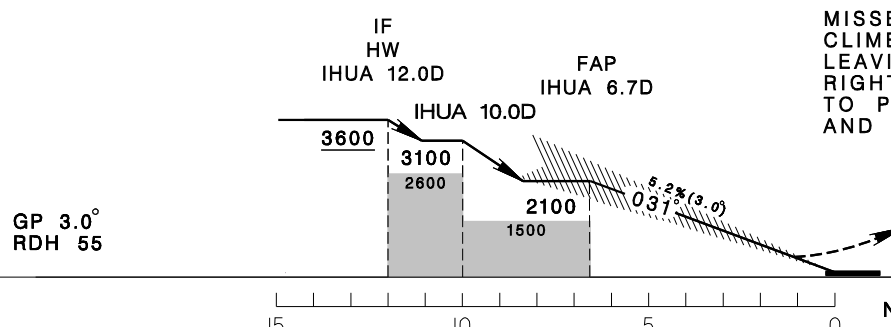
RCYU
ILS RWY03

TAIPEI APP 124.0 119.1 330.2 276.8				HUALIEN TWR 118.1 126.18 236.6				VAR 4° W
Apt Elev: 51'		Rwy03 THR Elev: 44'		Trans Level: FL130		Trans Alt: 11,000'		
BEARINGS ARE MAGNETIC; DISTANCES ARE NAUTICAL MILES; ELEVATIONS, HEIGHTS IN FEET								



SAFEGUARD PROCEDURE FOR HW LOCATOR OUTAGE:
 IF NO RECEIVING OF HW BEFORE PASSING HLN R-190, ADVISE ATC & MAINTAIN 5000 TRACK HLN R-190 TO HLN THEN PEIPU TO HOLD, OR REQUEST RADAR VECTOR FROM ATC.

MISSED APCH:
 CLIMB ON RWY HDG UNTIL LEAVING 630, THEN TURN RIGHT TO TRACK HLN R-096 TO PEIPU, MAINTAIN 4000 AND HOLD.



CHANGES: NEW PAGE NUMBER

MINIMA (OCA IN FT, VIS IN M, OCH IN FT)					
CATEGORY	A	B	C	D	
STRAIGHT IN	251/ 1200 207	263/ 1200 219	271/ 1200 227	281/ 1200 237	
STRAIGHT IN (ALS OUT)	251/ 1200 RVR1200	263/ 1200 RVR1200	271/ 1200 RVR1200	281/ 1200 RVR1200	

NOTE
 1. CIRCLING NOT AUTHORIZED.
 2. CAUTION HIGH TERRAIN AROUND THE AIRPORT AND ALONG THE APPROACH COURSE.
 3. A 341ft MSL STACK AT 1.52NM EAST OF THR03.
 4. A 405FT MSL TREE AT 1.18NM SE OF THR03.
 *DME REQUIRED.